

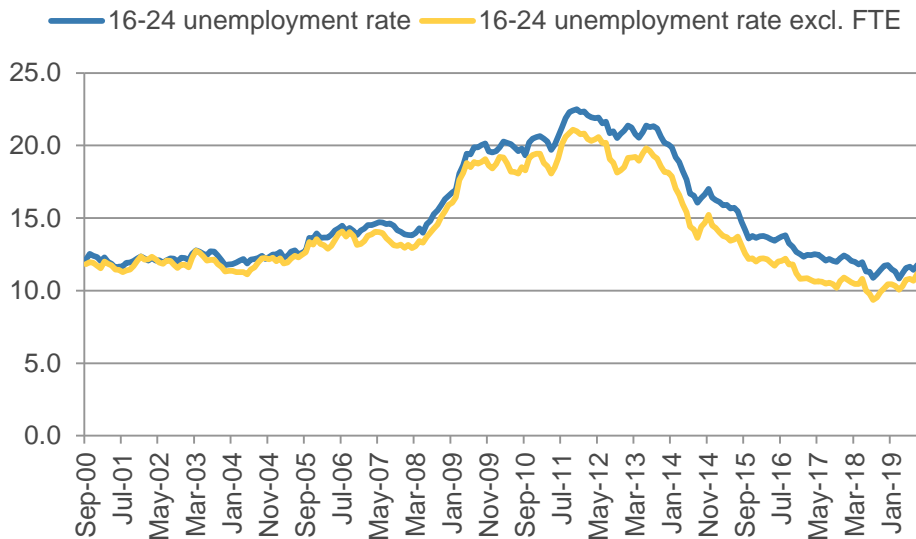
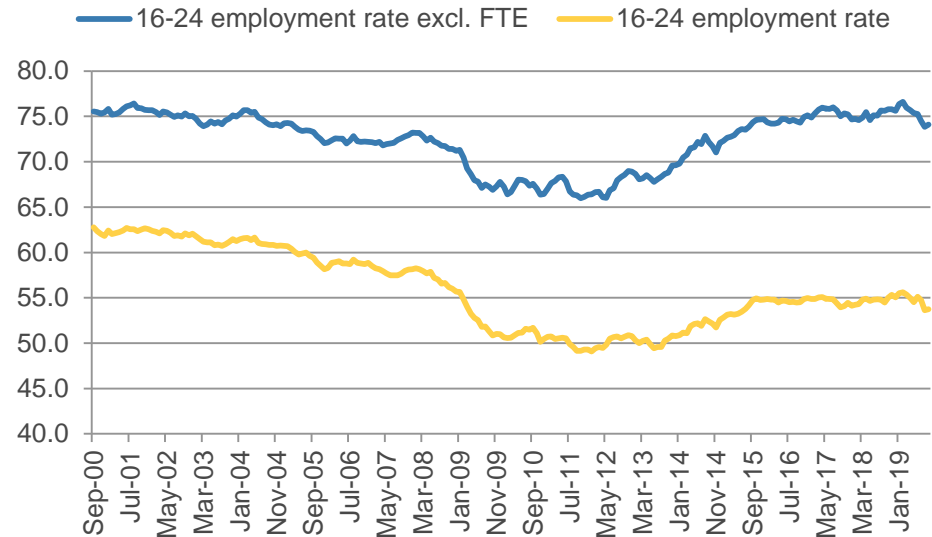
Supporting youth participation

Closing the youth jobs gap

Tony Wilson, Institute Director
tony.wilson@employment-studies.co.uk
[@tonywilsonIES](https://twitter.com/tonywilsonIES)

The good news first – employment is up and unemployment down

- Employment for those not in education almost back to pre-recession levels (74%)
- Although youth employment overall is far lower, as more young people are in study

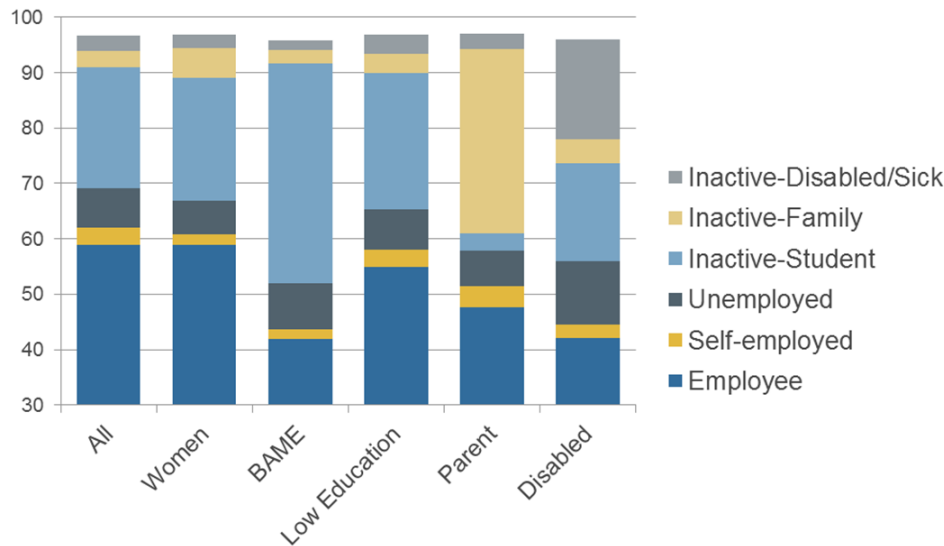
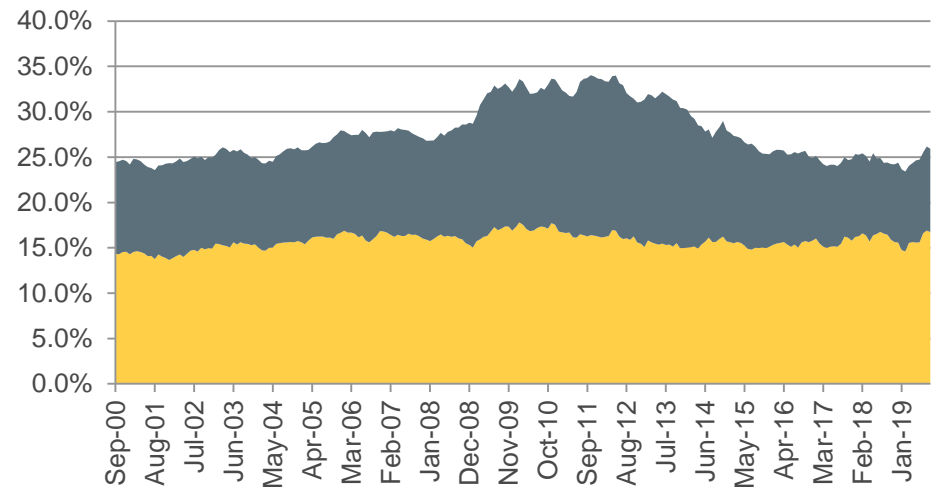


- And unemployment is close to historic lows (11% for those not in education) – although it's ticked up in the last year
- Most of the time, if young people are looking for work then they can find it

But the not so good news – too many young people are being left out...

- A “missing million” young people are not in full-time education or employment
- The large majority of these are ‘economically inactive – so not looking/available for work
- One in six of those not in FTE – barely budged in 20 years, and inching up

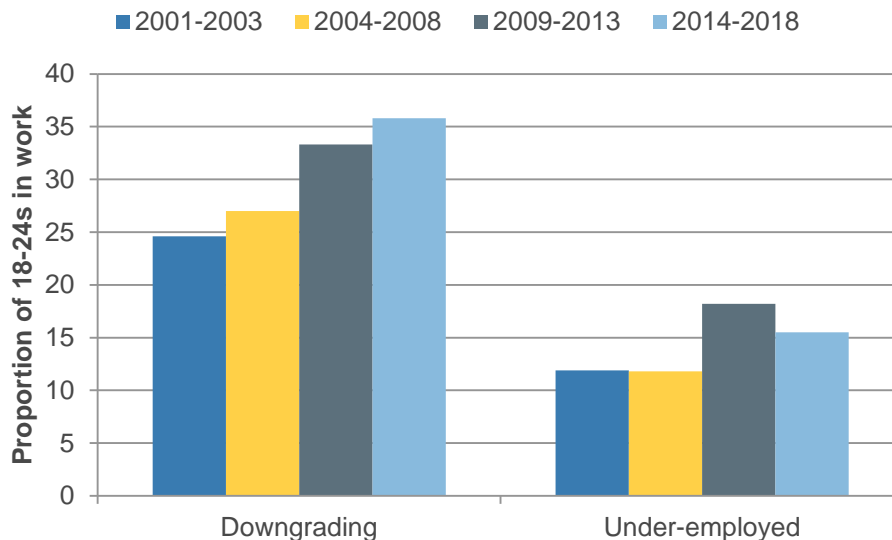
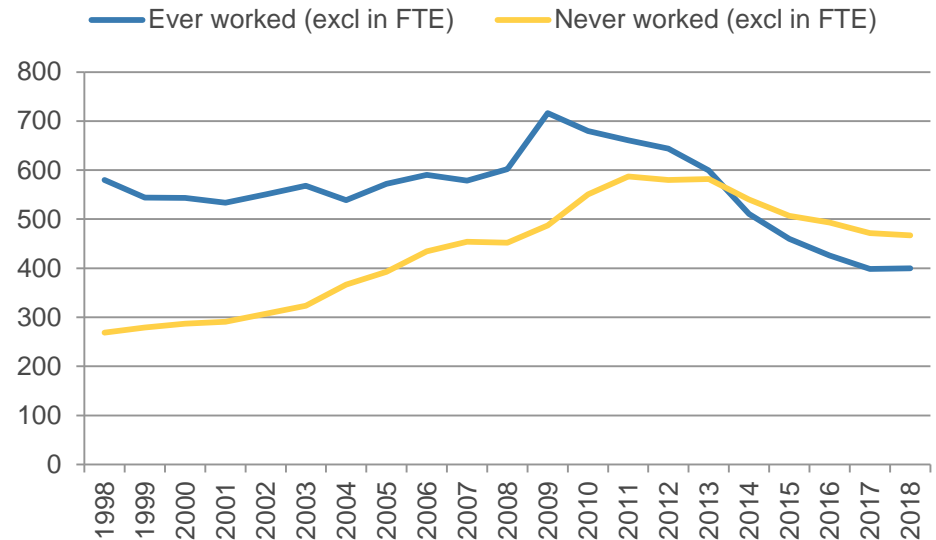
■ Proportion inactive, not FTE ■ Proportion unemployed, not FTE



- This is a structural problem
- Young parents and disabled people are the two largest groups not in education or employment
- Explaining three quarters of all non-student inactivity and just over half of the missing million

Work experience is a key part of this...

- Among those who have left full-time education, most young people have never worked
- Reflects social/ parental attitudes, education pressures, employer practice, regulation



- And often, experiences of work are not great
- One in three 18-24s in work are over-qualified, one in seven under-employed
- Nearly a quarter in temp or part-time work because they can't find an alternative

This is the complicated mess that we are trying to fix

£10.5 billion...

INCREASING EMPLOYMENT

- YOUTH ENGAGEMENT FUND (14-17)
- YOUTH EMPLOYMENT INITIATIVE (15-24)
- JOBCENTRE PLUS WORK COACH SUPPORT (18+)
- DISABILITY EMPLOYMENT ADVISER SUPPORT (18+)
- FLEXIBLE SUPPORT FUND (18+)
- WORK AND HEALTH UNIT TRIALS (18+)
- EMPLOYMENT SUPPORT FOR EX-OFFENDERS (18+)
- YOUTH OBLIGATION (18-21)
- WORK AND HEALTH PROGRAMME (21+)
- COUNCIL EMPLOYMENT INITIATIVES (18+)
- NHS-FUNDED EMPLOYMENT SUPPORT (18+)
- IAPT MENTAL HEALTH EMPLOYMENT SUPPORT (18+)

IMPROVING SKILLS

- WORK EXPERIENCE (18-24)
- TRAINEESHIPS (16-24)
- POST-16 COLLEGES
- GENERAL FE COLLEGES
- SIXTH FORM COLLEGES
- FREE/STUDIO/UTCS
- TECHNICAL LEVELS (16-19)
- LEVY & NON LEVY APPRENTICESHIPS (16+)
- ADULT EDUCATION BUDGET (19+)
- HIGHER EDUCATION (18+)
- ADVANCED LEARNER LOANS (19+)
- SECTOR BASED WORK ACADEMIES (18+)
- COUNCIL SKILLS INITIATIVES (18+)
- CAREERS ADVICE AND GUIDANCE (12+)



FRAGMENTED EMPLOYMENT AND SKILLS SERVICES
for young people and adults

NARROWING GAPS

- BUILDING BETTER OPPORTUNITIES (16+)
- NATIONAL CITIZENSHIP SERVICE (16-17)
- TROUBLED FAMILIES
- INNOVATION FUND (14+)
- FAIR CHANCE FUND (18-24)
- TARGETED SUPPORT FOR YOUNG CARELEAVERS, SPECIAL EDUCATIONAL NEEDS AND DISABILITIES (SEND) AND YOUNG OFFENDERS
- PREVENTION AND SUPPORT FOR YOUNG PEOPLE NOT IN EDUCATION, EMPLOYMENT TRAINING (NEET)
- HIGHER EDUCATION ACCESS (18+)

DELIVERED BY

COMMISSIONED BY

ACCOUNTABLE TO

Skills providers	Councils
Employment providers	JCP
Careers and Enterprise Company	Schools
Education Business Partnerships	
National Careers Service	Colleges

DH	Councils	DfE
DWP	DCLG	Cabinet Office
Employers		

Employers / LEPs	JCP/DWP	DCLG
Councils	CCGs	Cabinet Office
DfE/Education and Skills Funding Agency		
National Offender Management Service		
Big Lottery	National Apprenticeship Service	
Careers and Enterprise Company		



So what do we do about it??!!

Our take on what works

- **Working together** – whole system approach, sharing data, no wrong doors
- **Engaging at transitions, but not only then** – also going to those young people not in education/ work – where they live, the services they use (children's/ health), where they go
- **Tailored, nuanced approaches** – building on skills, needs, assets of different young people
- **Linking skills and employment** – particularly Apprenticeships and AEB, and particularly for parents and disabled people
- **Youth proofing employer strategies** – Growth Hubs and Local Industrial Strategies, and how public sector leads by example
- **Jobs at the heart of it** – advisers who 'get' jobs market; good quality work experience; exposure to employers; job brokering and matching – even when learning

Doing all of this requires structural change led by central government...

- And all manifestos are very weak on this
- But there's real opportunities for local leadership
- At LEP level, in co-ordinating across growth, regeneration, investment, skills, inclusion
- At local level, between schools, colleges, employment services, wider support (and mapping these)
- Within services – bringing together locally trusted organisations, hiding the wiring, working better together

Supporting youth participation

Closing the youth jobs gap

Tony Wilson, Institute Director
tony.wilson@employment-studies.co.uk
[@tonywilsonIES](https://twitter.com/tonywilsonIES)