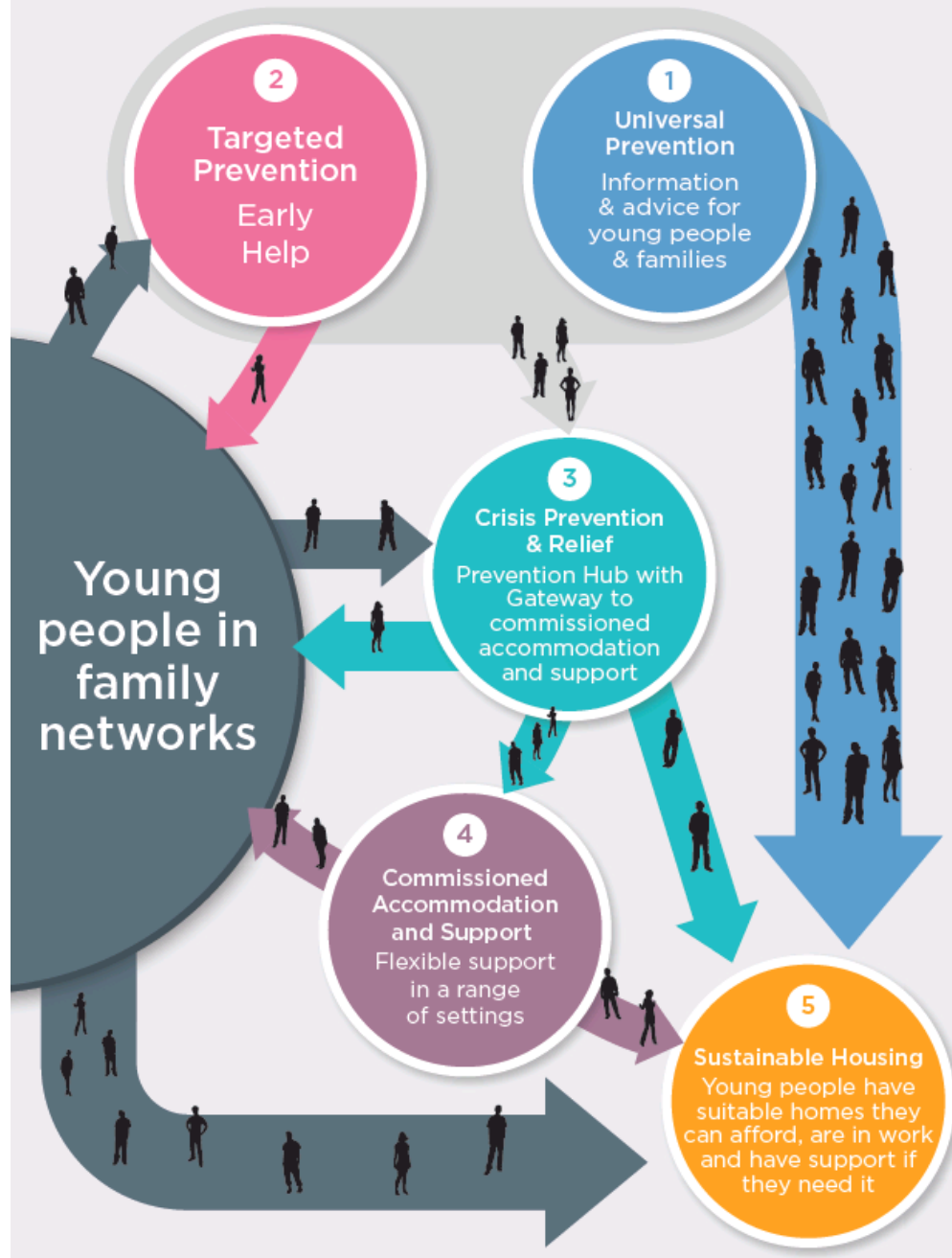
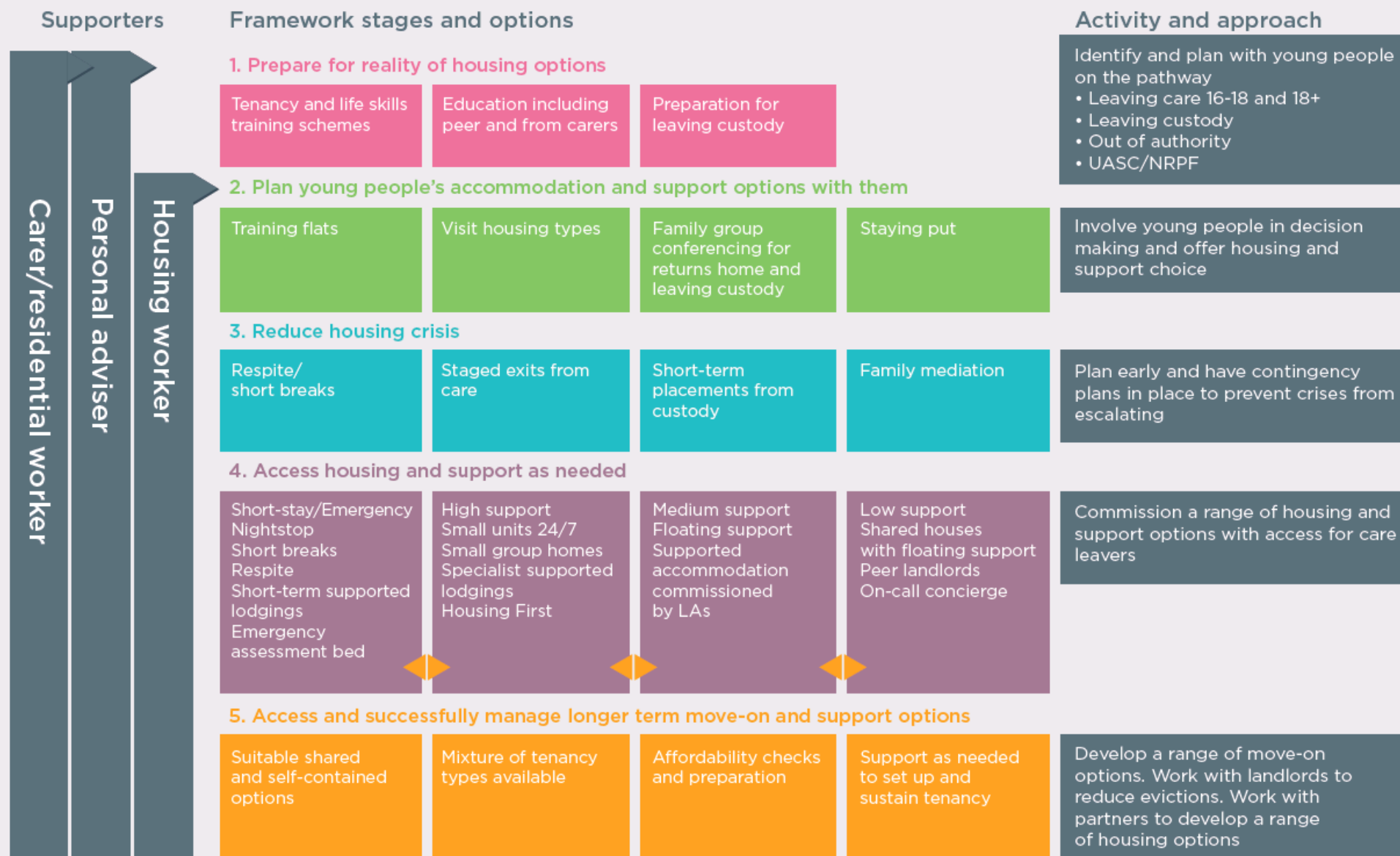


Positive Pathway Framework



Care leavers accommodation and support framework

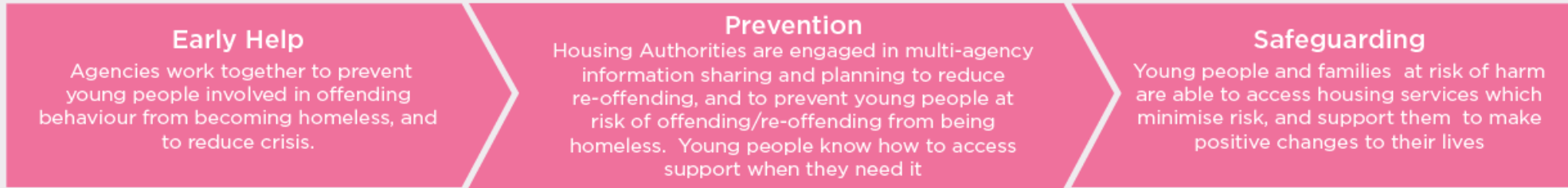


Underlying principles - young people are:

- able to make mistakes and never 'fall out' of the pathway
- helped to succeed
- offered flexible support that adapts to meet their needs
- offered supportive and unconditional relationships
- the shared responsibility of their corporate parent

Youth Justice Accommodation Pathway

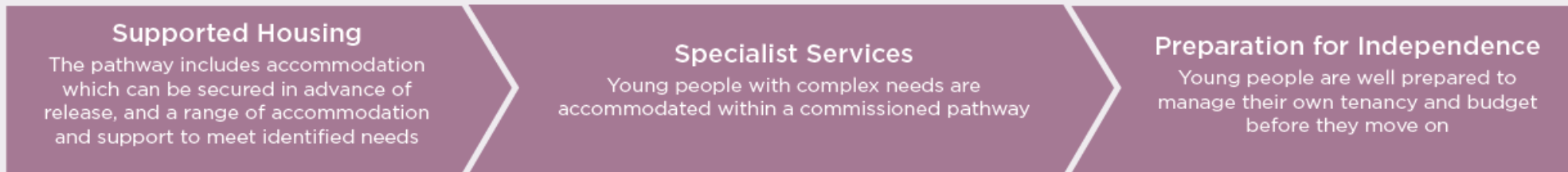
Strand 1. Young people in the community: Preventing homelessness and reducing re-offending risk



Strand 2. Young people in custody: Planning for successful resettlement

Start of sentence	Young People and their families are involved in resettlement planning from the outset. Action is taken to protect or surrender a tenancy or license and to minimise debt. Future barriers to accommodation are identified and included within the sentence plan.
Planning for release	Preparations made for young people to live with family where possible and identify any support required. Young People's needs, risks and wishes are assessed. Where no accommodation is available on release timely referrals to be made to a housing authority under the 'duty to refer' several weeks prior to release. Young people who are unable to return home are actively involved in planning for their accommodation and support on release.
Finalise release plans	Accommodation is identified, and a contingency plan prepared. Release plans finalised and support put in place appropriate to young person's age and needs.

Strand 3. Jointly commissioned accommodation and support



Strand 4. A range of housing options with resettlement support

