

A whole organisation approach

Jean Templeton
Chief Executive
St Basils

In 2015/16, 4751 young people sought our assistance as homeless or at risk

- **54%** young men;
- **56%** referrals were BME young people
- **21%** aged 16-17 years; **59%** aged 18-21 years; **20%** aged 22-25
- **58%** of 16/17 year olds NEET; **74%** of 18-21 + **81%** of 22-25 were unemployed
- **Over 80%** of YP cite family conflict as a contributory factor leading to homelessness
- **Over 1/3** have multiple support needs, incl DV, complex trauma, ASD, sexual exploitation, self-harm, suicidal ideation; drugs and alcohol, criminal convictions



Fair Chance Social Investment Bond Programme

350 young people across 5 LA areas who fall out of existing systems:

- Homeless and NEET -100%
- Mental Health issues – 83% (Suicide/Self Harm – 35%)
- Offending background – 65%
- Learning Disability – 40%
- Substance Misuse – 55% (problematic)
- Abuse – 32% (reported)
- Debt/Eviction – 71%
- Sexual abuse/Sexual exploitation – 34% (female only)

St Basils' **PIE** - Objectives

- Improve positive outcomes for young people:
 - Harness & build resilience and capability
 - Enable young people to move on, sustain independence in a challenging environment
- Ensure staff have skills, attitudes, behaviours and resilience to cope, and support positive outcomes for young people

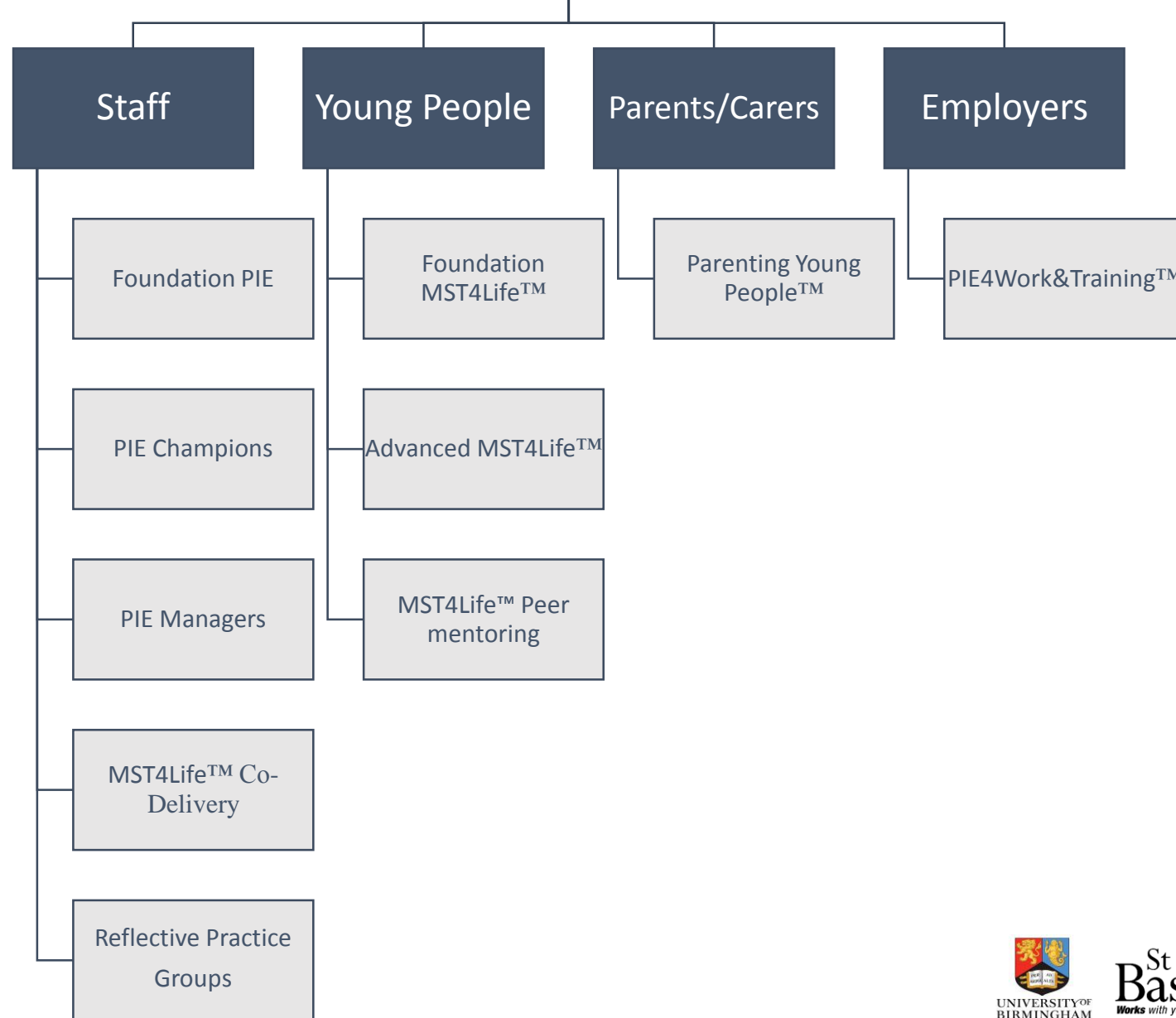


resilience

Our Journey

- 2008 Rough Sleeper Strategy
- 2009 DOH and DCLG Research commissioned
Enabling Environments: Rex Haig and Robin Johnson – (60% of young homeless and single homeless had mental health problems)
- 2011 Launch of **St Basils' PIE programme** in partnership with Dr Nick McGuire & NHS
- 2012 DCLG – PIE for Homeless People: Good Practice Guide
- 2013 Development of **Mental Skills Training4Life™** with University of Birmingham
- 2015 Created **Psychologically Informed Parenting** Programme with UoB, NHS and Brap
- 2016 Further expansions: **PIE4Work&Training™**; and **PIE4Education™**; **Parenting Young People™** roll out to 400+ NHS employees 2016-18; Fulfilling Lives programme – No Wrong Door Network – roll out to 20 organisations 2016-19; Care leaver pathfinder

St Basils PIE Model



Outcomes

- **Of 4751** young people who sought our assistance as homeless*
 - **84%** of young people were prevented from being homeless
 - **1273** young people lived with us during the year
 - **87%** achieved positive outcomes and left in a planned positive way
 - **77%** of young people who were NEET re-engaged with education, training and employment.

Figures from 2015/16